

Korea's Invitation Programs for Outstanding Overseas Researchers

Brain Pool (BP) Program
Korea Research Fellowship (KRF) Program

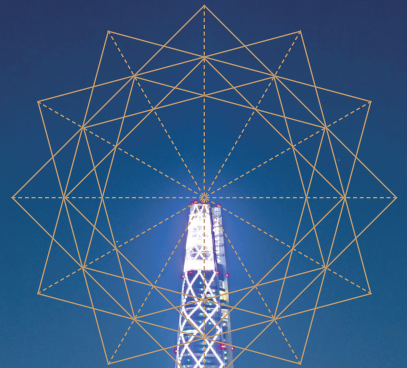
The Korean government invites outstanding overseas researchers to Korea under the philosophy of "People Come First"; to promote joint research activities and international cooperation with researchers in Korea.

Your R&D experience in Korea and accumulated human networks will enhance your research capabilities, which will lead you to grow as a global research leader.

In addition, we provide settlement support services such as residence, living expenses, medical service, Korean language education, and child education support during your time in Korea at your host institution.

We look forward to your interest in the international joint research program in Korea.

Young Min You, Minister of Ministry of Science and ICT



Introducing Korea

Korean People

Population

51,000,000

Lowest
Illiteracy Rate
in the World

1%

The World's 13th
Longest Average
Life Span

81.8_{age}

Korean Economy & Exports

GDP

Global Ranking



11th

Export

Global Ranks



7th

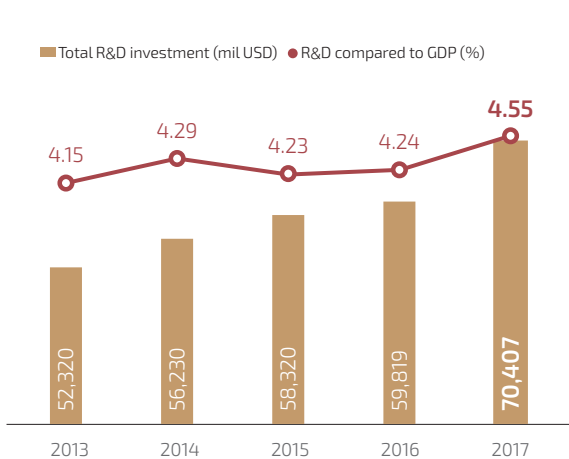
Korean Culture



Introducing R&D Environments in Korea

Overall R&D (Government & Private) Investment

- Korea invested \$70,407 million in R&D, 5th largest in the world.



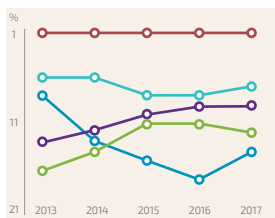
The R&D Expenditure in Korea

- The R&D expenditure in Korea in relation to its GDP was 4.55%, 1st in the world.

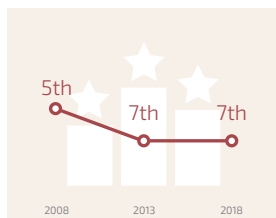
		● Total R&D expenditure ■ As a percentage of GDP	
No. 1	Korea (2017)	4.55	● 69,699
No. 2	Israel (2016)	4.25	● 13,508
No. 3	Japan (2016)	3.14	● 155,447
No. 4	Germany (2016)	2.93	● 101,958
No. 5	USA (2006)	2.74	● 511,089
No. 6	France (2016)	2.25	● 55,417
No. 7	China (2006)	2.11	● 235,936
No. 8	UK (2016)	1.69	● 44,759

Korean Achievements in Science & Technology

- Ranks 1st in the Bloomberg Innovation Index
- Ranks 7th in the IMD science competency Index



- Bloomberg Innovation Index
- Scientific Infrastructure (IMD)
- Technological Infrastructure (IMD)
- Innovation Indikator (Deutsche Telecom etc.)
- Global Innovation Index (WIPO)



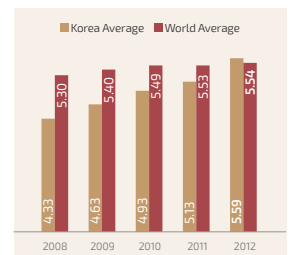
- IMD* Index
- Ranked 6th in 2015
- Science competency has increased since 2005
- * IMD : International Institute for Management Development

Korean Achievements in Science & Technology

- The number of SCI journal articles increased to 59,628 in 2016, 12th in the world.



The number of SCI journal articles



The number of citations in scientific journals



Brain Pool Program

Since 1994, a total of 1,909 mid-career researchers have been invited to research institutions in Korea to perform joint research projects. Maximum amount up to \$177,000 (USD)/person/year are provided for personnel costs and invitation expenses for the invited scientists.

Program Details

• Eligibility of Invited Scientists (Brain Pool candidates)

Outstanding scientists in all fields of science and technology who have 'more than five years of experience in R&D outside of Korea after obtaining a Ph.D'.

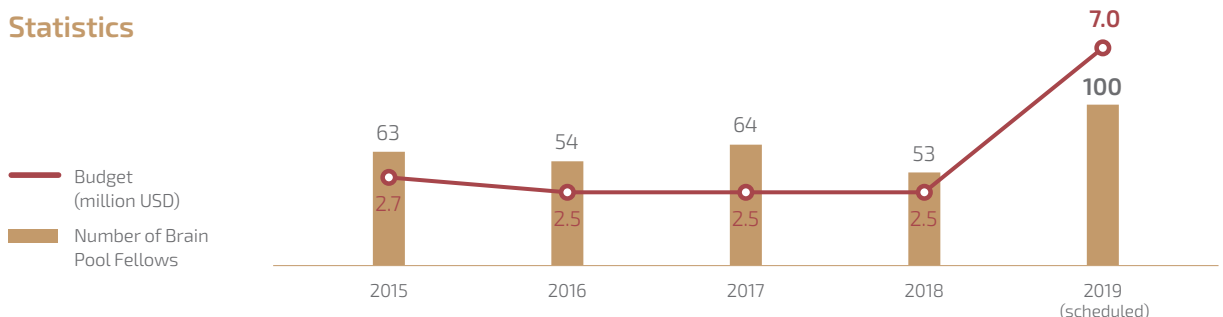
• Quota for 2019 (Scheduled): Around 100

• Application Submission Period

(1st) Dec.27, 2018 ~ Mar.5, 2019 18:00 (Korea Local Time)

(2nd) Scheduled to be announced on May ~ June

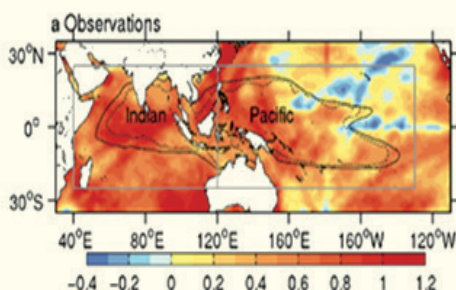
Statistics



<Representative Achievements from the Brain Pool Program>

(Host PI) Prof. Seung-Ki Min of POSTECH

(Brain Pool Fellow) Dr. Evan Weller



In the joint study by Prof. Seung-Ki Min (host PI) & Dr. Evan Weller (Brain Pool Fellow), the cause of ocean warming and its impact on the extreme climate in East Asia was analyzed. This is the world's first research to discover the fact that the cause of warm pool expansion is related with the increase in green house gas emissions due to human activities.

• Title : Human-caused Indo-Pacific warm pool expansion (Journal : Science Advances)



Korea Research Fellowship

Since 2015, a total of 182 overseas early career researchers have been invited to research institutions in Korea and got long-term growth support. Maximum amount up to \$ 62,000 (USD)/person/year are provided for personnel costs, living expenses and other expenses for the invited scientists.

Program Details

- **Eligibility of Overseas Ph.D. Researchers (KRF candidates)**

Overseas post-doc researchers or Korean national post-doc researchers currently residing outside of Korea who have 'obtained their doctoral degree within the past five years' starting from May 31, 2019

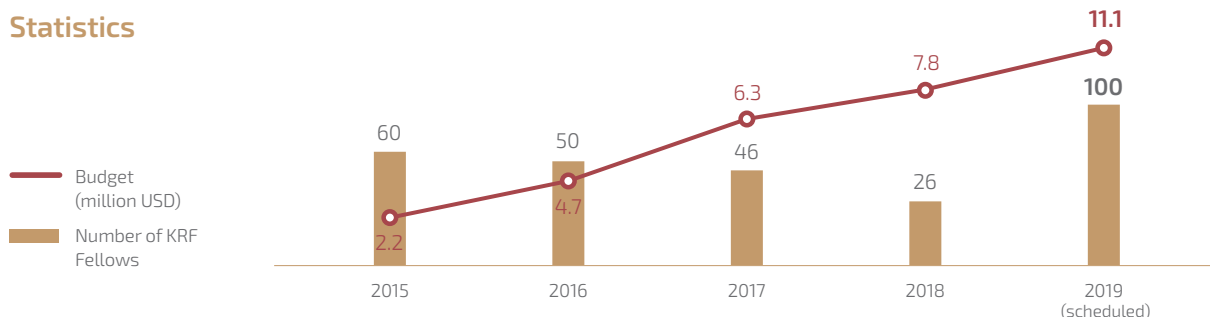
- **Quota for 2019 (Scheduled): Around 100**

- **Application Submission Period**

(1st) Feb. 1, 2019 ~ Apr. 12, 2019 18:00 (Korea Local Time)

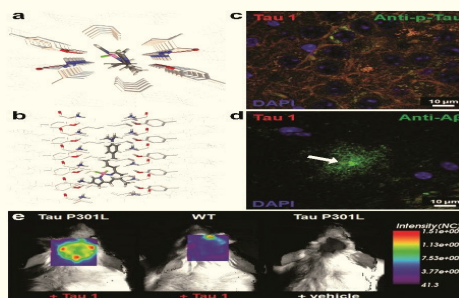
(2nd) Scheduled to be announced on June ~ July

Statistics



<Representative Achievements of the KRF Program>

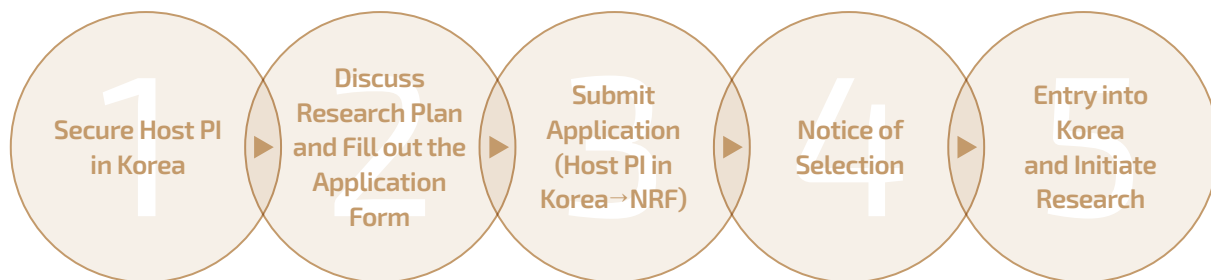
(Host PI) Prof. Kim, Jong Seung of Korea University
(KRF Fellow) Dr. Peter Verwilst



The Joint study by Professor Kim Jong Seung - Dr. Peter Verwilst (KRF fellow) discovered a selective drug delivery system for cancer activation under hypoxia conditions. 2 papers related to this project were published in 'Chemical Society' Journal. (top 2% of the JCR)

- Title: Organic molecule-based photothermal agents: an expanding photothermal therapy universe (Journal : CHEMICAL SOCIETY REVIEWS)
- Title : Shedding light on tau protein aggregation: the progress in developing highly selective fluorophores (Journal : CHEMICAL SOCIETY REVIEWS)

Application Procedures for Overseas Researchers



① Secure Host PI in Korea: Secure host PI in Korea via participating in the international conferences for networking or by "Research Host Matching Service" in NRF.

※ Research Host Matching Service can be provided at www.bpkrf.or.kr

※ You may find information about Korea's R&D research fields at NTIS system (www.ntis.go.kr)

② Fill out the Application Form: Discuss the field of joint research and fill out the application form with host PI and invited researcher

※ You may find application forms at www.bpkrf.or.kr

③ Submit Application: Host PI in Korea shall apply for the program via ERND* system of NRF (Host PI→NRF) *Integrated Research Support System

④ Notice of Selection: Notice of selection results (NRF→Host PI)

⑤ Entry into Korea and Initiate Research: Entry into Korea·Initiation of the program should be made within 3 months from the notice.

●
For further information, please refer to the
official announcements at NRF homepage or
contact us at the number or email address below.

E-mail

bpkrf@nrf.re.kr

Phone Number

+82-2-3460-5637, 5624

Homepage

www.bpkrf.or.kr





Ministry of Science and ICT



National Research
Foundation of Korea

